

BAKER SPD In-Line Choke

Assembly Product Number Scheme

BASE PART NUMBER	END CONNECTION	DISC MATERIAL	SLEEVE and SEALS MATERIAL																																		
1st to 3rd Digits	5th Digit	7th Digit	9th Digit																																		
9 4 8	<table border="0"> <tr><td>FNPT</td><td>0</td></tr> <tr><td>Union</td><td>1</td></tr> <tr><td>600 RF</td><td>2</td></tr> <tr><td>600 RTJ</td><td>3</td></tr> <tr><td>900/1500 RF</td><td>4</td></tr> <tr><td>900/1500 RTJ</td><td>5</td></tr> <tr><td>Grooved</td><td>6</td></tr> <tr><td>Socket Weld</td><td>7</td></tr> <tr><td>Union x Socket Weld</td><td>8</td></tr> </table>	FNPT	0	Union	1	600 RF	2	600 RTJ	3	900/1500 RF	4	900/1500 RTJ	5	Grooved	6	Socket Weld	7	Union x Socket Weld	8	<table border="0"> <tr><td>Ceramic Al₂O₃</td><td>1</td></tr> <tr><td>Tungsten Carbide</td><td></td></tr> <tr><td>GR A1-C6</td><td>8</td></tr> </table>	Ceramic Al ₂ O ₃	1	Tungsten Carbide		GR A1-C6	8	<table border="0"> <tr><td>Stellite w/Nitrile</td><td>1</td></tr> <tr><td>Stellite w/L7</td><td>2</td></tr> <tr><td>(low temp) bolting w/Nitrile</td><td></td></tr> <tr><td>Stellite</td><td>3</td></tr> <tr><td>w/Fluoroelastomer</td><td></td></tr> </table>	Stellite w/Nitrile	1	Stellite w/L7	2	(low temp) bolting w/Nitrile		Stellite	3	w/Fluoroelastomer	
FNPT	0																																				
Union	1																																				
600 RF	2																																				
600 RTJ	3																																				
900/1500 RF	4																																				
900/1500 RTJ	5																																				
Grooved	6																																				
Socket Weld	7																																				
Union x Socket Weld	8																																				
Ceramic Al ₂ O ₃	1																																				
Tungsten Carbide																																					
GR A1-C6	8																																				
Stellite w/Nitrile	1																																				
Stellite w/L7	2																																				
(low temp) bolting w/Nitrile																																					
Stellite	3																																				
w/Fluoroelastomer																																					
XXX	X	X	X																																		
X	X	X	X																																		
SIZE	HOLE SIZE	BODY MATERIAL																																			
4th Digit	6th Digit	8th Digit																																			
<table border="0"> <tr><td>1"</td><td>1</td></tr> <tr><td>2"</td><td>2</td></tr> </table>	1"	1	2"	2	<table border="0"> <tr><td>2¹/₈"</td><td>1</td></tr> <tr><td>2¹/₄"</td><td>3</td></tr> <tr><td>2³/₈"</td><td>4</td></tr> <tr><td>2¹/₂"</td><td>5</td></tr> </table>	2 ¹ / ₈ "	1	2 ¹ / ₄ "	3	2 ³ / ₈ "	4	2 ¹ / ₂ "	5	<table border="0"> <tr><td>Steel</td><td>1</td></tr> <tr><td>Aluminum Bronze</td><td>2</td></tr> <tr><td>CF8M (316) SS</td><td>3</td></tr> <tr><td>CF3M (316 L) SS</td><td>5</td></tr> </table>	Steel	1	Aluminum Bronze	2	CF8M (316) SS	3	CF3M (316 L) SS	5															
1"	1																																				
2"	2																																				
2 ¹ / ₈ "	1																																				
2 ¹ / ₄ "	3																																				
2 ³ / ₈ "	4																																				
2 ¹ / ₂ "	5																																				
Steel	1																																				
Aluminum Bronze	2																																				
CF8M (316) SS	3																																				
CF3M (316 L) SS	5																																				

BAKER SPD In-Line Choke

Repair Kit Product Number Scheme

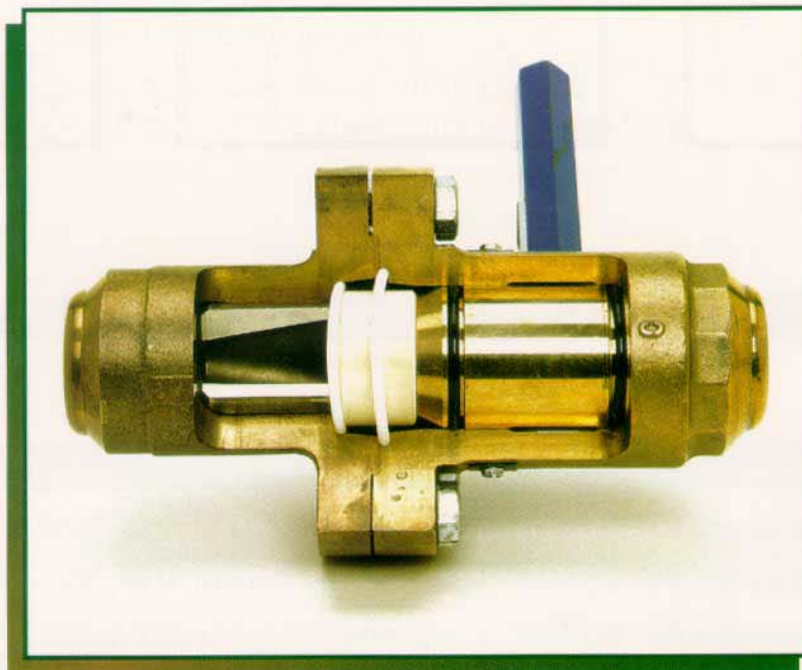
BASE PART NUMBER
<i>1st to 7th Digits</i>
0 5 1 9 4 8 3

XXXXXXX

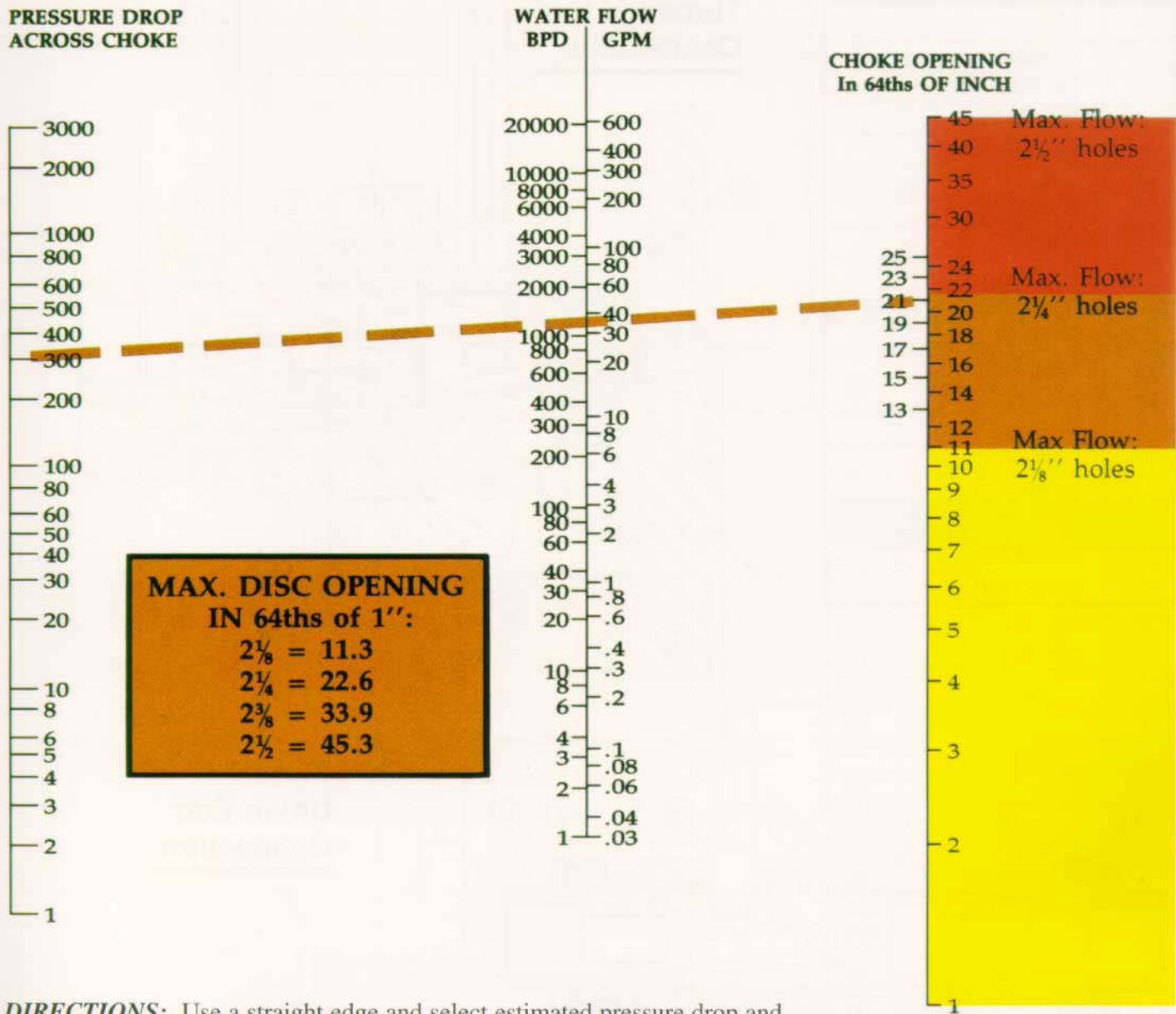
DISC MATERIAL	
<i>9th Digit</i>	
Ceramic 99% Al ₂ O ₃	1
Tungsten Carbide GR A1-C6	8

X

HOLE SIZES	
<i>8th Digit</i>	
1-2 Holes 1/8" Ø	1
2-2 Holes 1/4" Ø	2
3-2 Holes 3/8" Ø	3
4-2 Holes 1/2" Ø	4
5-2 Holes 5/8" Ø	5
6-1 Pie 54/64" (.844)	6
7-1 Pie 61/64" (.953)	7



BAKER SPD In-Line Choke – Flow Chart



DIRECTIONS: Use a straight edge and select estimated pressure drop and desired flow. Read the Choke Opening in 64th of an inch. Specify the smallest Disc Opening that will handle the flow.

EXAMPLE: 35 GPM or 1200 BPD at 300 ΔP is 21/64; use disc with 2-1/4" holes.

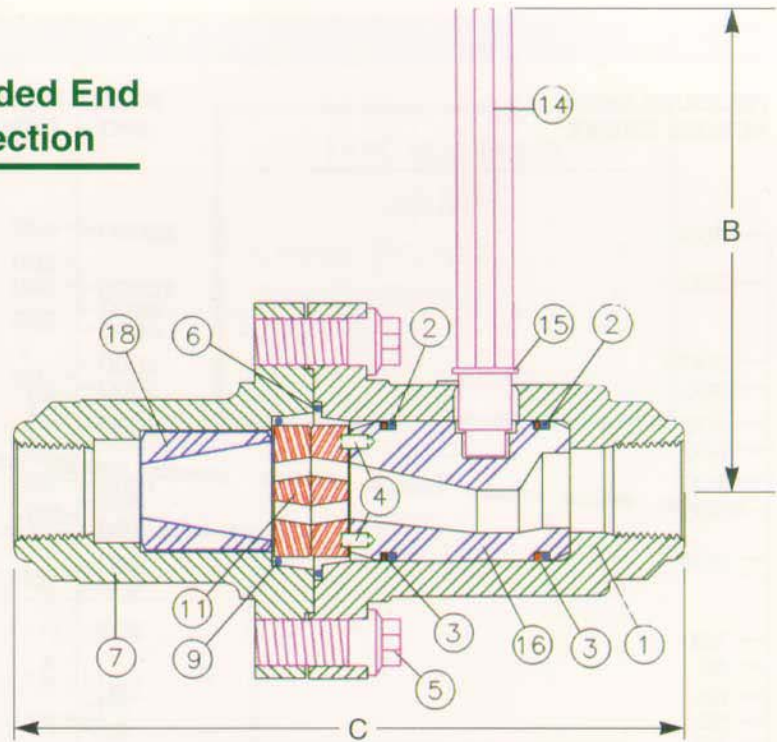
FOR MAXIMUM CHOKE LIFE USE THE SMALLEST DISC THAT WILL FLOW THE REQUIRED AMOUNT OF FLUID.

BAKER SPD In-Line Choke – Threaded & Union End

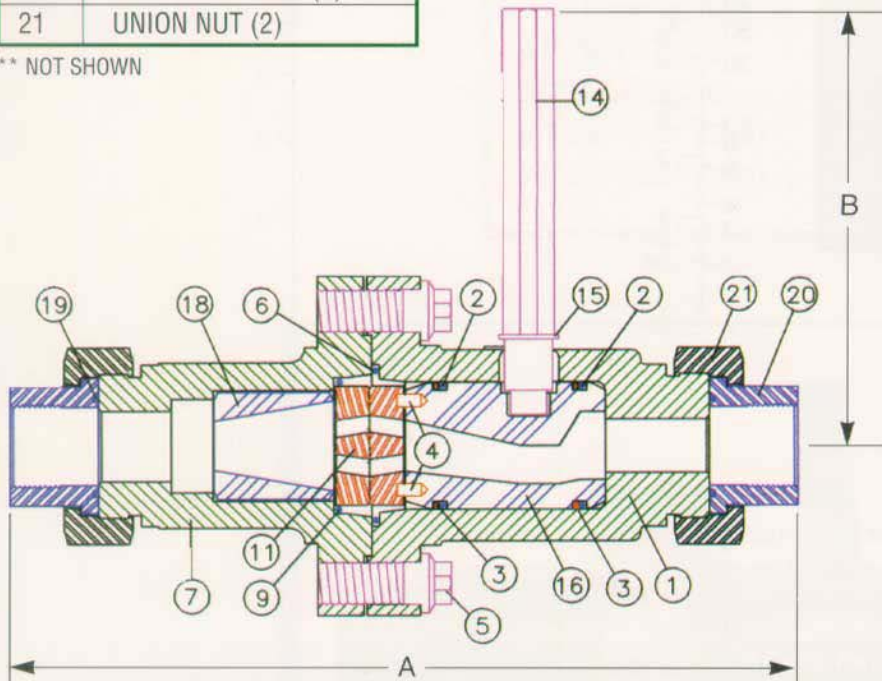
ITEM	DESCRIPTION
1	BODY
2	O-RING
3	BACK-UP RING
4	DOWEL PINS
5	CAP SCREW (2)
6	O-RING
7	OUTLET HUB
9	O-RING
11	DISC (2)
12	CALIBRATION BAND **
13	SCREWS **
14	HANDLE
15	INDICATOR
16	ROTATOR
17	LUBE FITTING **
18	WEAR SLEEVE
19	O-RING (2)
20	UNION ADAPTER (2)
21	UNION NUT (2)

** NOT SHOWN

Threaded End Connection

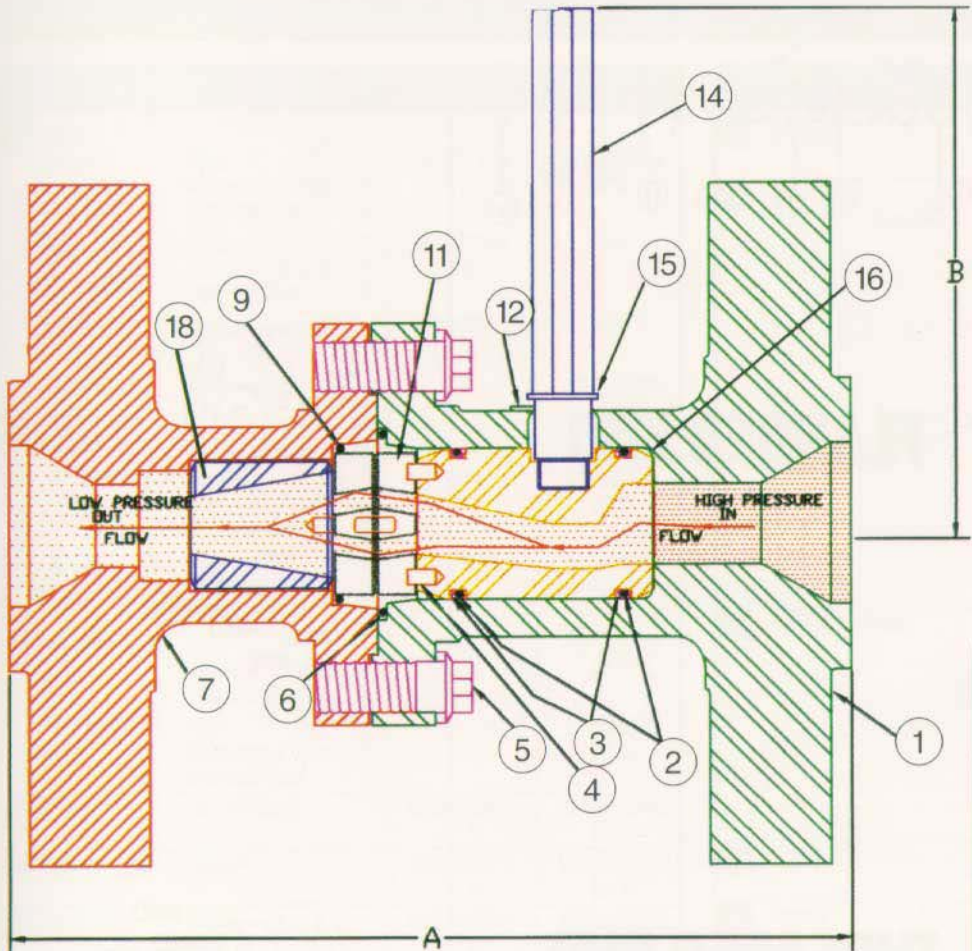


Union End Connection



DESCRIPTION	DIM A (INCHES)	DIM B (INCHES)	DIM C (INCHES)	CONNECTIONS	WORKING PRESSURE (psi)	TEMPERATURE (°F) RATING
1" IN-LINE CHOKE	11 ⁷ / ₁₆ "	6 ⁹ / ₁₆ "	8 ⁷ / ₈ "	NPT	3705	-20° TO +250° F
2" IN-LINE CHOKE	12 ⁹ / ₁₆ "	6 ⁹ / ₁₆ "	10"	NPT	3705	-20° TO +250° F

BAKER SPD In-Line Choke – Flanged End

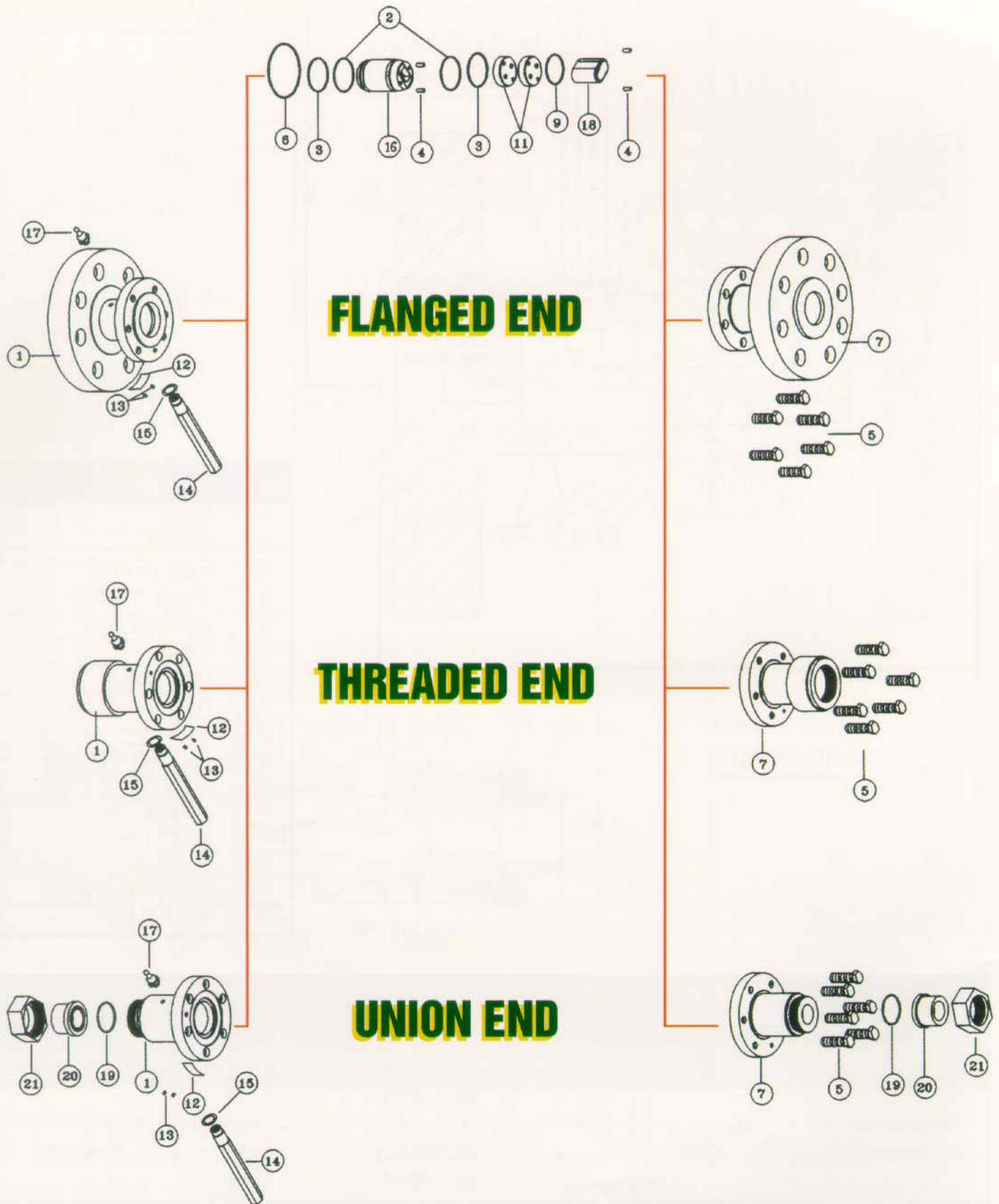


ITEM	DESCRIPTION
1	BODY
2	O-RING
3	BACK-UP RING
4	DOWEL PIN, DISK
5	CAP SCREW (2)
6	O-RING
7	OUTLET HUB
9	O-RING
11	DISC
12	CALIBRATION BAND
13	SCREWS**
14	HANDLE
15	INDICATOR
16	ROTATOR
17	LUBE FITTING**
18	WEAR SLEEVE

**NOT SHOWN

DESCRIPTION	DIM A (INCHES)	DIM B (INCHES)	CONNECTIONS	WORKING PRESSURE (PSI)	TEMPERATURE (°F) RATING
2" IN-LINE CHOKE	10½"	6 ⁹ / ₁₆ "	400/600 RF 900/1500 RF	1,480 3,750	-20° TO +250° F
2" IN-LINE CHOKE	10 ⁵ / ₈ "	6 ⁹ / ₁₆ "	400/600 RTJ 900/1500 RTJ	1,480 3,705	-20° TO +250° F

BAKER SPD In-Line Choke



BAKER SPD Parts and Weights

In-Line Choke

DESCRIPTION			1"	2"	
1	Body Threaded	Steel 2	0519371X0 7 lb	0519373X0 8 lb	
		Aluminum Bronze 6			
		Stainless Steel 8			
	Union End	Steel 2	0519372X0 8 lb	O/A	
		Aluminum Bronze 6			
		Stainless Steel 8			
	Socket Weld	316 L Stainless Steel	051987080 8 lb	O/A	
	Grooved End	Aluminum Bronze	O/A	051984060 8 lb	
	Flanged	RF ANSI 600	Steel 2	O/A	0519374X0 12 lb
			Aluminum Bronze 6		
			Stainless Steel 8		
		RTJ ANSI 600	Steel 2	O/A	0519460X0 12 lb
			Aluminum Bronze 6		
			Stainless Steel 8		
		RF ANSI 1500	Steel 2	O/A	0519375X0 20 lb
			Aluminum Bronze 6		
			Stainless Steel 8		
		RTJ ANSI 1500	Steel 2	O/A	0519458X0 20 lb
Aluminum Bronze 6					
Stainless Steel 8					
2	O-Ring	90 DPC Nitrile	WWB223P40 0.1 lb	WWB223P40 0.1 lb	
3	Back-Up Ring	Teflon®	WWD223T10 0.1 lb	WWD223T10 0.1 lb	
4	Dowel Pin	Monel	WWLA060HH 0.1 lb	WWLA060HH 0.1 lb	
5	Cap Screw		WWG31H1H6 0.1 lb	WWG31H1H6 0.1 lb	
6	O-Ring	Teflon®	WWB227T10 0.1 lb	WWB227T10 0.1 lb	
7	Hub Assembly Threaded	Steel 2	0519379X1 7 lb	0519381X1 8 lb	
		Aluminum Bronze 6			
		Stainless Steel 8			
	Union End	Steel 2	0519380X1 8 lb	O/A	
		Aluminum Bronze 6			
		Stainless Steel 8			
	Socket Weld	Stainless Steel 316 L	051987681 8 lb	O/A	
	Grooved End	Aluminum Bronze	O/A	051983960 8 lb	
	Flanged	RF ANSI 600	Steel 2	O/A	0519376X1 12 lb
			Aluminum Bronze 6		
			Stainless Steel 8		
		RTJ ANSI 600	Steel 2	O/A	0519461X1 12 lb
			Aluminum Bronze 6		
			Stainless Steel 8		
		RF ANSI 1500	Steel 2	O/A	0519377X1 20 lb
			Aluminum Bronze 6		
			Stainless Steel 8		
		RTJ ANSI 1500	Steel 2	O/A	0519459X1 20 lb
Aluminum Bronze 6					
Stainless Steel 8					

DESCRIPTION			1"	2"	
9	O-Ring		WWB224T10 0.1 lb	WWB224T10 0.1 lb	
11	Disc	Ceramic	.125 1/8"	051938322 0.3 oz	051938322 0.3 oz
			.250 1/4"	051938324 0.3 oz	051938324 0.3 oz
			.375 3/8"	051938326 0.3 oz	051938326 0.3 oz
		.500 1/2"	051938328 0.3 oz	051938328 0.3 oz	
		Tungsten Carbide	.125 1/8"	051938342 0.3 oz	051938342 0.3 oz
			.250 1/4"	051938344 0.3 oz	051938344 0.3 oz
	.375 3/8"		051938346 0.3 oz	051938346 0.3 oz	
	Calibration Band	.125 1/8"	051938402 0.3 oz	051938402 0.3 oz	
		.250 1/4"	051938404 0.3 oz	051938404 0.3 oz	
		.375 3/8"	051938406 0.3 oz	051938406 0.3 oz	
		.500 1/2"	051938408 0.3 oz	051938408 0.3 oz	
	13	Screw		WWGG0618F 0.3 oz	WWGG0618F 0.3 oz
14	Handle		051938500 1 lb	051938500 1 lb	
15	Indicator	Truarc Ring	WWC510075 0.1 oz	WWC510075 0.1 oz	
16	Rotator	Steel 2	0519386X0 2 lb	0519386X0 2 lb	
		Aluminum Bronze 6			
		Stainless Steel 8			
17	Lube Fitting		WWW00C000 0.1 lb	WWW00C000 0.1 lb	
18	Wear Sleeve		W51938201 1 lb	W51938201 1 lb	
19	O-Ring	90 DPC	WWB125P40 0.1 lb	WWB125P40 0.1 lb	
20	Union Adapter	316 SS 8	05193990X 1 lb	05194050X 1 lb	
		316 L SS NPT 9			
		316 L SS Socket Weld			051957909 1 lb
21	Union Nut	Steel with QPQ Coating	051940000 1 lb	051940600 2 lb	

Note: Redress kit for 1" and 2" In-Line Chokes; P/N 051948400;
 Contains: Item 2, 3, 6, 9
 Repair Kit for 1" and 2" In-Line Chokes; P/N 0519483XX;
 Contains: Item 2, 3, 6, 9, 11

O/A – On Application