



Application

Designed to protect electrical and electronic controls, components, and instruments in typical industrial environments. The UL Type 12 rating protects enclosed equipment from dust, dirt, oil, and dripping water. These enclosures are used for housing motor starters, drives, contactors, and PLCs, as well as a wide variety of other electrical and electronic equipment. Rack-mounting accessories provide rugged protection for sensitive rack-mounted components in harsh industrial environments. The enclosures are used extensively in automotive, pulp and paper, wood products, textile, and similar industries. Four styles are available to provide maximum flexibility:

1. Single-Door Single-Access Enclosures (single door on front)
2. Single-Door Dual-Access Enclosures (single door on front and rear)
3. Two-Door Single-Access Enclosures (overlapping doors on front)
4. Two-Door Dual-Access Enclosures (overlapping doors on front and rear)

Construction

- 12 gauge steel
- Seams continuously welded and ground smooth; no holes or knockouts
- Stiffeners on back of two-door enclosures maintain flatness and increase rigidity
- Lifting eyes for easy handling
- 3-point latches operated by oiltight key-locking handle
- Latch rod rollers for easy door closing
- Heavy-gauge continuous hinges support each door
- Data pockets are high-impact thermoplastic
- Internal mounting channels welded horizontally to sides at top, bottom, and center
- Optional panels and rack mounting angles can be mounted anywhere along channels
- Oil-resistant door gasket
- Bonding provision on door
- Provision for mounting fluorescent light

Finish

White polyester powder paint inside with ANSI 61 gray polyester powder paint outside over phosphatized surfaces. Optional panels and side-mounted panels have white enamel or conductive finish. Swing-out panels, rack mounting frames, heavy-duty panel supports, and center panel supports are white.

Industry Standards

UL 508A, File No. E61997: Type 12
NEMA/EEMAC Type 12
E.I.A. RS310D
CSA, File No. 42186, Type 12
IEC 60529, IP55

Accessories

See also *Accessories chapter*.

Blower Package
Casters
Clamping Nut Kit
Corrosion Inhibitors
Electric Heaters
Electrical Interlocks
External Data Pockets
Fan Cooling Products
Floor Stand Kit
Folding Shelf
INTERSAFE[®] Data Interface Ports
Keyboard Kit
Lighting Kit
Panel Support Kit
Panels
Touch-Up Paint (ATPPY61)
Window Kit

Modification Services Program

You can customize this product to your unique requirements by specifying from these options:

- Enclosure height, width, depth
- Over 100 standard finish colors and textures
- Holes and cutouts in body, doors, subpanels
- Tapped holes, fasteners, mounting channel in enclosure or subpanel
- Mounting
- Doors
- Subpanels
- Structural changes
- Environmental control (louvers, fans, filters)
- Windows
- Standard accessories

To order, contact your local Hoffman sales representative.

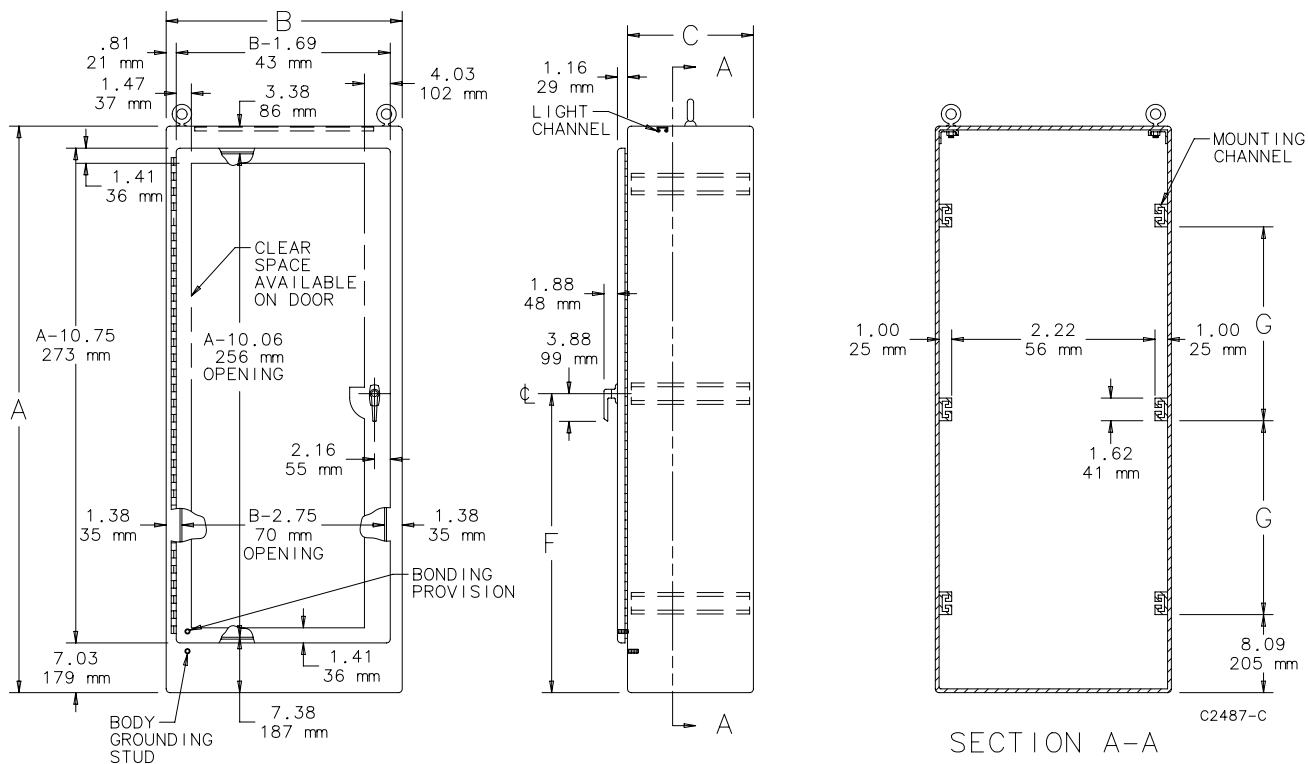
NOTE: For information about modifications outside the scope of the Modification Services program, contact your Hoffman sales representative.

Free-Standing Type 12 Enclosures

Standard Sizes Single-Door Single-Access Free-Standing Type 12 Enclosures

Catalog Number	A x B x C in. (mm)	F (in.)	F (mm)	G (in.)	G (mm)	Number of Lifting Eyes	Number of Rack Units
A602418FS	60.06 x 24.06 x 18.06 (1526 x 611 x 459)	32.03	814	23.12	587	2	28
A722418FS	72.06 x 24.06 x 18.06 (1830 x 611 x 459)	38.03	966	29.12	740	2	35
A723018FS	72.06 x 30.06 x 18.06 (1830 x 764 x 459)	38.03	966	29.12	740	2	35
A723618FS	72.06 x 36.06 x 18.06 (1830 x 916 x 459)	38.03	966	29.12	740	2	35
A902420FS	90.06 x 24.06 x 20.06 (2288 x 611 x 510)	47.03	1195	38.12	968	2	45
A903620FS	90.06 x 36.06 x 20.06 (2288 x 916 x 510)	47.03	1195	38.12	968	2	45
A603624FS	60.06 x 36.06 x 24.06 (1526 x 916 x 611)	32.03	814	23.12	587	2	28
A722424FS	72.06 x 24.06 x 24.06 (1830 x 611 x 611)	38.03	966	29.12	740	2	35
A723024FS	72.06 x 30.06 x 24.06 (1830 x 764 x 611)	38.03	966	29.12	740	2	35
A723624FS	72.06 x 36.06 x 24.06 (1830 x 916 x 611)	38.03	966	29.12	740	2	35
A903624FS	90.06 x 36.06 x 24.06 (2288 x 916 x 611)	47.03	1195	38.12	968	2	45
A723630FS	72.06 x 36.06 x 30.06 (1830 x 916 x 764)	38.03	966	29.12	740	4	35
A723636FS	72.06 x 36.06 x 36.06 (1830 x 916 x 916)	38.03	966	29.12	740	4	35
A903636FS	90.06 x 36.06 x 36.06 (2288 x 916 x 916)	47.03	1195	38.12	968	4	45

Single-Door Single-Access Free-Standing Type 12 Enclosures

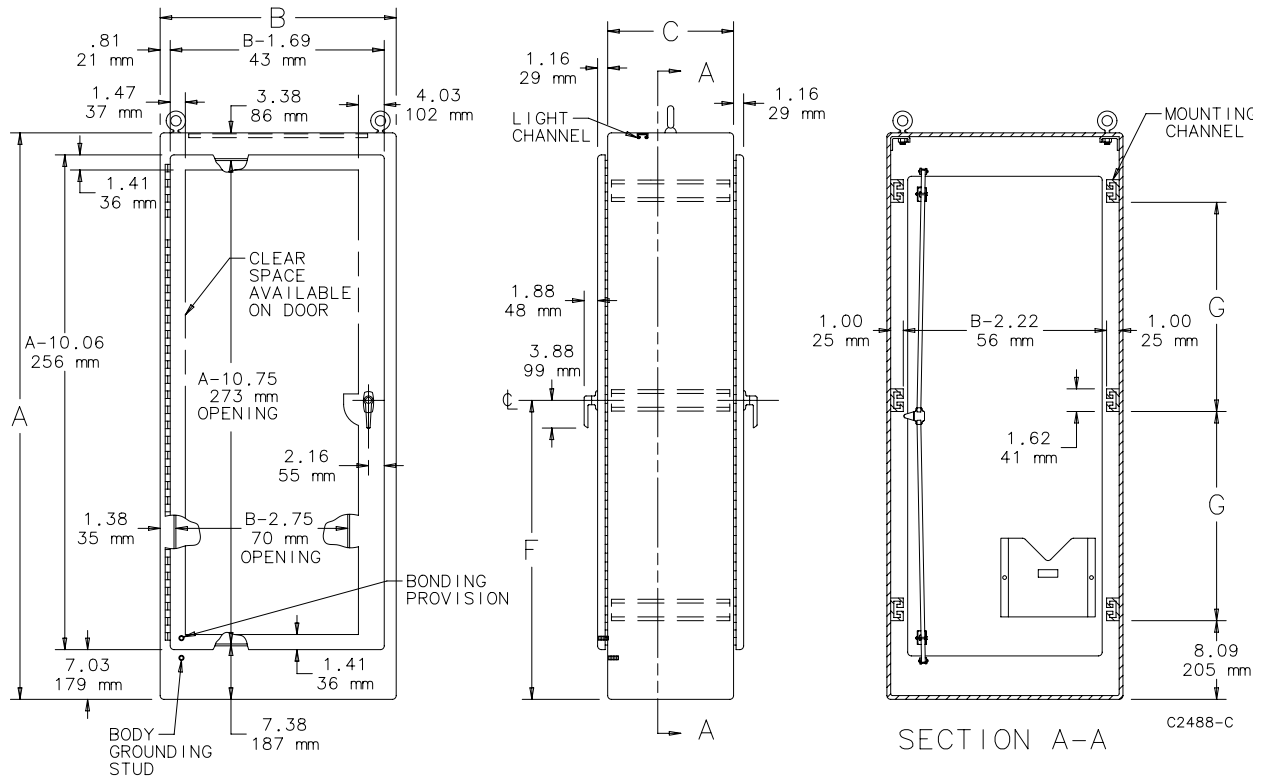


- NOTE:
1. Four lifting eyes are furnished if C=30.06 (764mm) or more.
 2. See General Accessories chapter for section view A-A showing accessories.
 3. Removable 12.00 x 12.00 (305 mm x 305mm) data pocket.

Standard Sizes Single-Door Dual-Access Free-Standing Type 12 Enclosures

Catalog Number	A x B x C in. (mm)	F (in.)	F (mm)	G (in.)	G (mm)	Number of Lifting Eyes	Number of Rack Units
A722424FSDA	72.06 x 24.06 x 24.06 (1830 x 611 x 611)	38.03	966	29.12	740	2	35
A723024FSDA	72.06 x 30.06 x 24.06 (1830 x 764 x 611)	38.03	966	29.12	740	2	35
A723624FSDA	72.06 x 36.06 x 24.06 (1830 x 916 x 611)	38.03	966	29.12	740	2	35
A903624FSDA	90.06 x 36.06 x 24.06 (2288 x 916 x 611)	47.03	1195	38.12	968	2	45
A722430FSDA	72.06 x 24.06 x 30.06 (1830 x 611 x 764)	38.03	966	29.12	740	4	35
A722436FSDA	72.06 x 24.06 x 36.06 (1830 x 611 x 916)	38.03	966	29.12	740	4	35
A723636FSDA	72.06 x 36.06 x 36.06 (1830 x 916 x 916)	38.03	966	29.12	740	4	35
A903636FSDA	90.06 x 36.06 x 36.06 (2288 x 916 x 916)	47.03	1195	38.12	968	4	45

Single-Door Dual Access Free-Standing Type 12 Enclosures



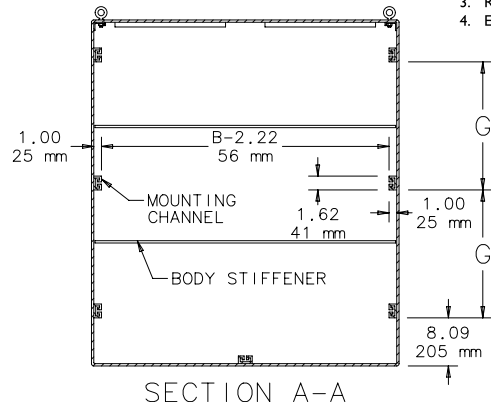
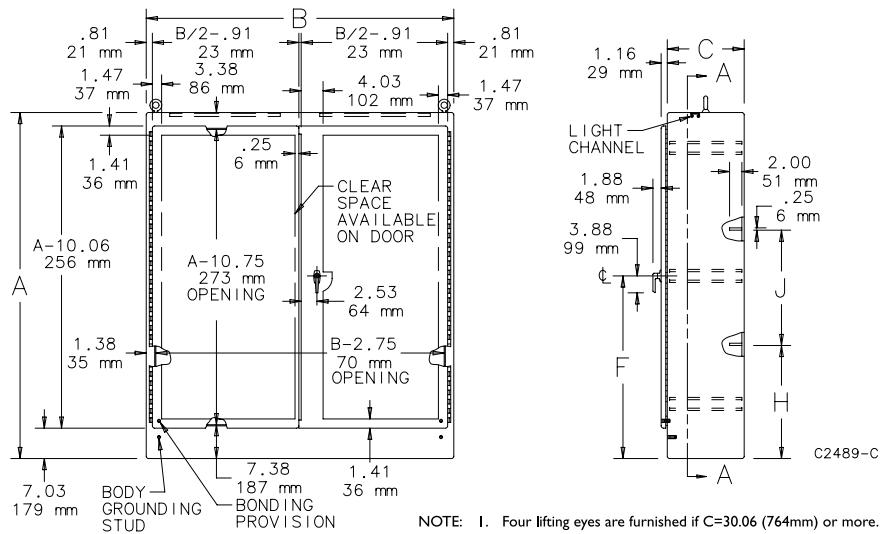
- NOTE:
1. Four lifting eyes are furnished if C=30.06 (764mm) or more.
 2. See General Accessories chapter for section view A-A showing accessories.
 3. Removable 12.00 x 12.00 (305mm x 305mm) data pocket.

Free-Standing Type I2 Enclosures

Standard Sizes Two-Door Single-Access Free-Standing Type I2 Enclosures

Catalog Number	A x B x C in. (mm)	F (in.)	F (mm)	G (in.)	G (mm)	H (in.)	H (mm)	J (in.)	J (mm)	Number of Lifting Eyes	Number of Rack Units
A604818FSD	60.06 x 48.06 x 18.06 (1526 x 1221 x 472)	32.03	814	23.12	587	19.88	505	20.03	509	2	28
A724818FSD	72.06 x 48.06 x 18.06 (1830 x 1221 x 472)	38.03	966	29.12	740	23.88	607	24.03	610	2	35
A726018FSD	72.06 x 60.06 x 18.06 (1830 x 1526 x 472)	38.03	966	29.12	740	23.88	607	24.03	610	2	35
A727218FSD	72.06 x 72.06 x 18.06 (1830 x 1830 x 472)	38.03	966	29.12	740	23.88	607	24.03	610	2	35
A904820FSD	90.06 x 48.06 x 20.06 (2288 x 1221 x 510)	47.03	1195	38.12	968	29.88	759	30.03	763	2	45
A907220FSD	90.06 x 72.06 x 20.06 (2288 x 1830 x 510)	47.03	1195	38.12	968	29.88	759	30.03	763	2	45
A724824FSD	72.06 x 48.06 x 24.06 (1830 x 1221 x 611)	38.03	966	29.12	740	23.88	607	24.03	610	2	35
A726024FSD	72.06 x 60.06 x 24.06 (1830 x 1526 x 611)	38.03	966	29.12	740	23.88	607	24.03	610	2	35
A727224FSD	72.06 x 72.06 x 24.06 (1830 x 1830 x 611)	38.03	966	29.12	740	23.88	607	24.03	610	2	35
A907224FSD	90.06 x 72.06 x 24.06 (2288 x 1830 x 611)	47.03	1195	38.12	968	29.88	759	30.03	763	2	45
A726036FSD	72.06 x 60.06 x 36.06 (1830 x 1526 x 916)	38.03	966	29.12	740	23.88	607	24.03	610	4	35
A907236FSD	90.06 x 72.06 x 36.06 (2288 x 1830 x 916)	47.03	1195	38.12	968	29.88	759	30.03	763	4	45

Two-Door Single Access Free-Standing Type I2 Enclosures



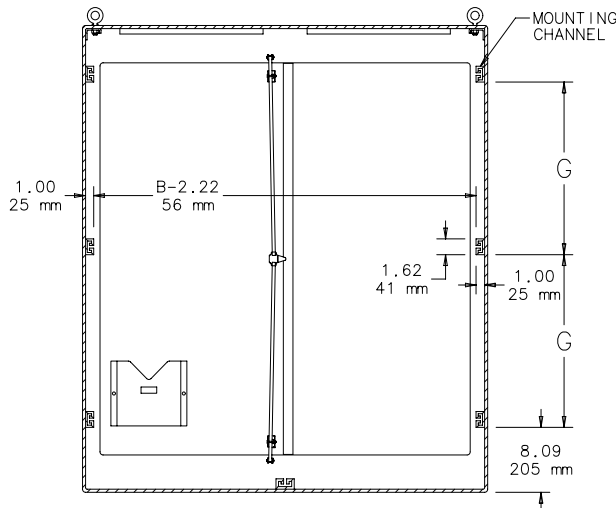
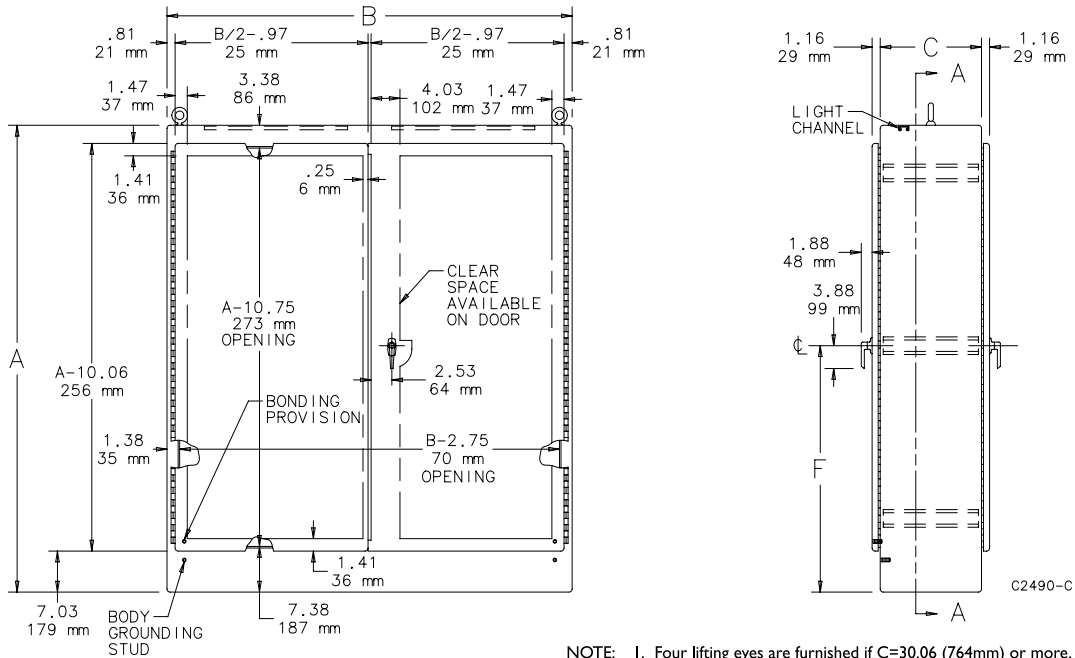
Industrial Enclosures

Free-Standing Type 12 Enclosures

Standard Sizes Two-Door Dual-Access Free-Standing Type 12 Enclosures

Catalog Number	A x B x C in. (mm)	F (in.)	F (mm)	G (in.)	G (mm)	Number of Lifting Eyes	Number of Rack Units
A724824FSDAD	72.06 x 48.06 x 24.06 (1830 x 1221 x 611)	38.03	966	29.12	740	2	35
A726024FSDAD	72.06 x 60.06 x 24.06 (1830 x 1526 x 611)	38.03	966	29.12	740	2	35
A727224FSDAD	72.06 x 72.06 x 24.06 (1830 x 1830 x 611)	38.03	966	29.12	740	2	35
A907224FSDAD	90.06 x 72.06 x 24.06 (2288 x 1830 x 611)	47.03	1195	38.12	968	2	45
A726036FSDAD	72.06 x 60.06 x 36.06 (1830 x 1526 x 916)	38.03	966	29.12	740	4	35

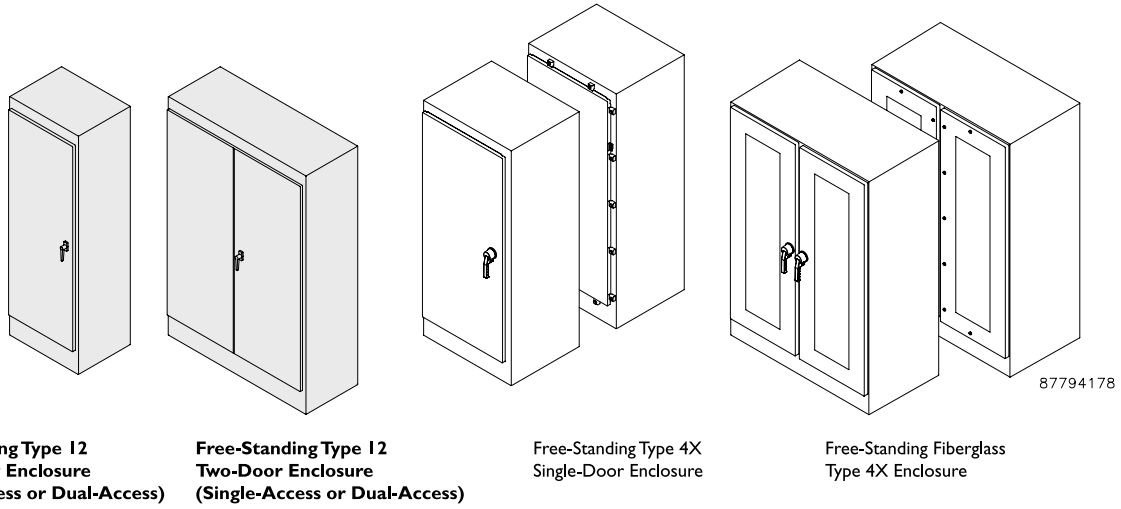
Two-Door Dual Access Free-Standing Type 12 Enclosures Drawing



SECTION A-A

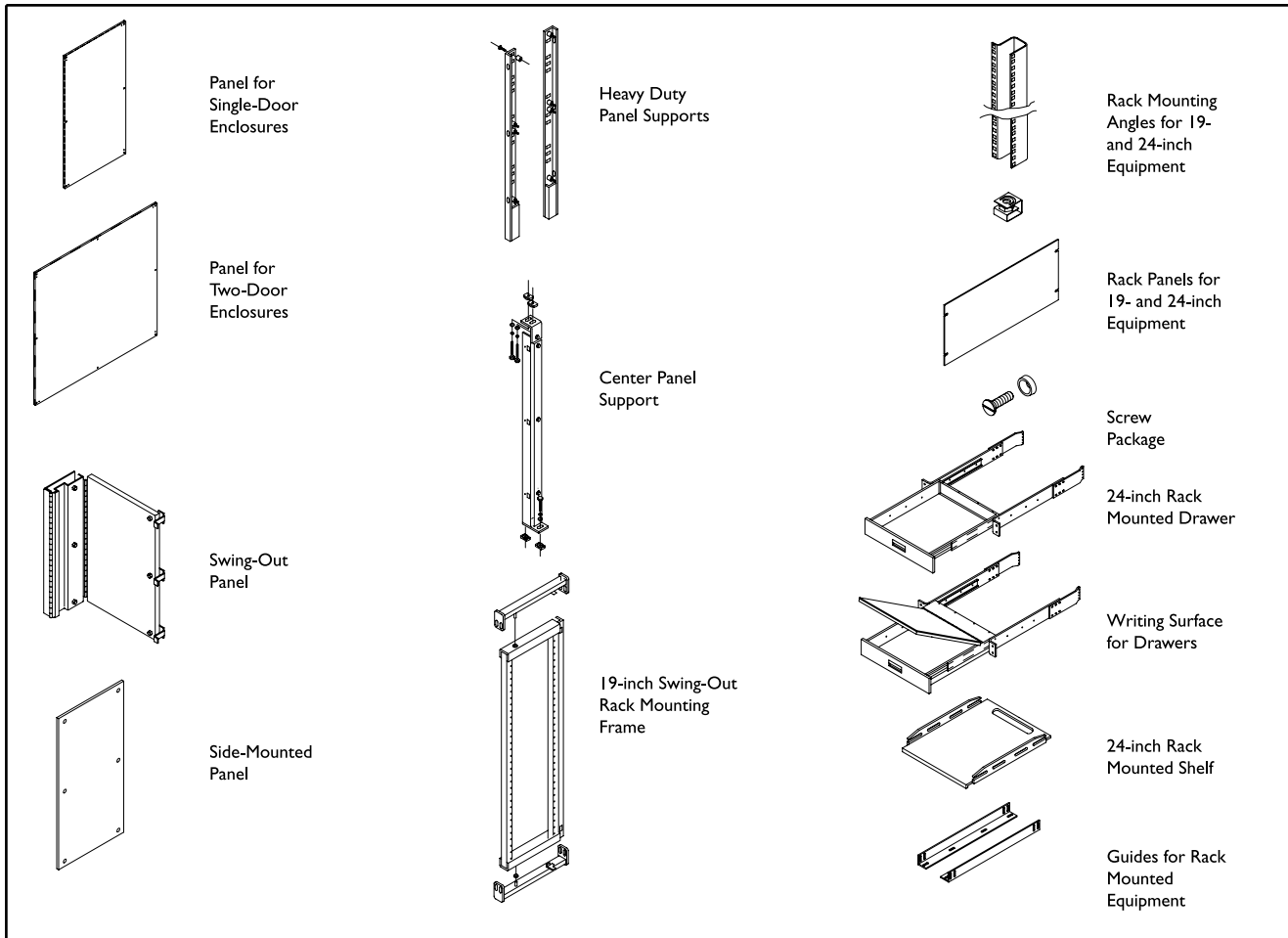
Free-Standing Type 12 Enclosures

Free-Standing Enclosures Accessory Selection Guide



Internal Accessories

(See Accessories for details)



C2586-C

To select an accessory for an enclosure, see the following Free-Standing Enclosure Accessory tables.